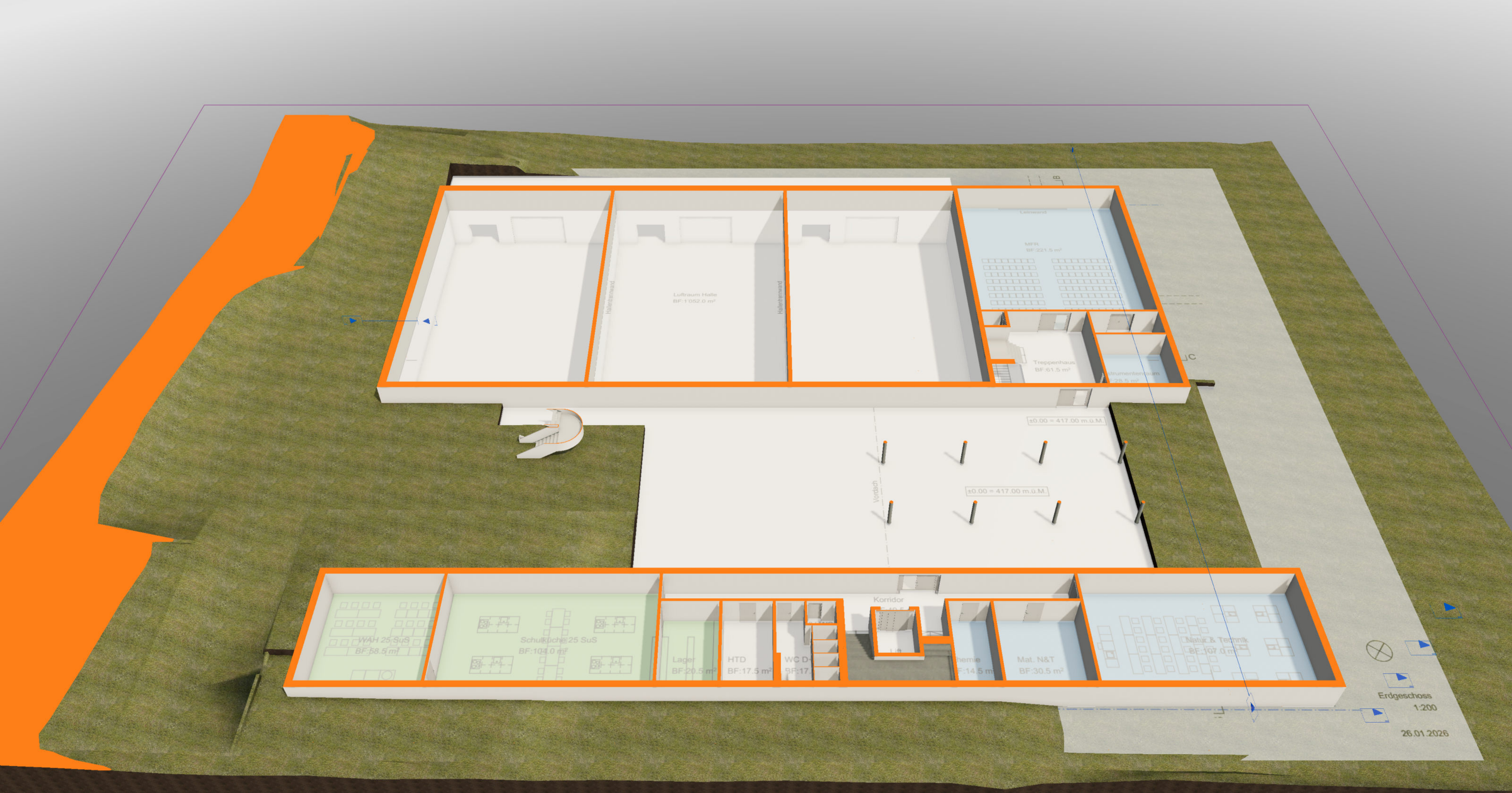


Untergeschoss
1:200

26.01.2026



Luftraum Halle
BF: 1'052.0 m²

MFR
BF: 221.5 m²

Treppenhaus
BF: 61.5 m²

Instrumentenzimmer
BF: 28.5 m²

±0.00 = 417.00 m.ü.M.

±0.00 = 417.00 m.ü.M.

WAH 25 SuS
BF: 58.5 m²

Schulküche 25 SuS
BF: 103.0 m²

Lager
BF: 20.5 m²

HTD
BF: 17.5 m²

WC D
BF: 17.5 m²

Korridor
BF: 10.5 m²

chemie
BF: 14.5 m²

Mat. N&T
BF: 30.5 m²

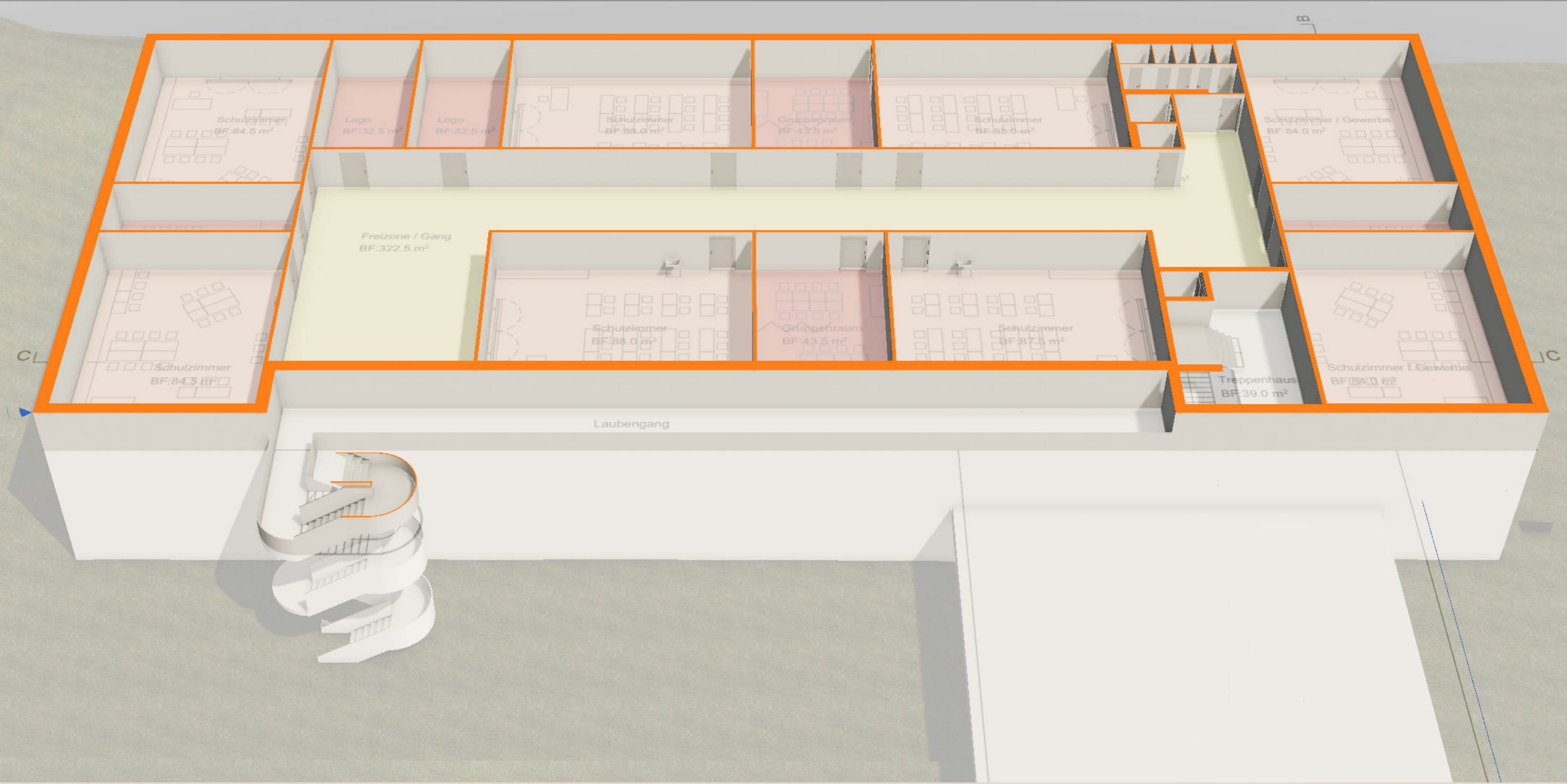
Natur & Technik
BF: 167.0 m²



Erdgeschoss

1:200

26.01.2026





BL